

Advice from Last Year's Student Leaders

Running a society can be extremely rewarding and fun, but also challenging at times.

Here's some top tips from the Presidents of the Year 2024/25 on how they did it!

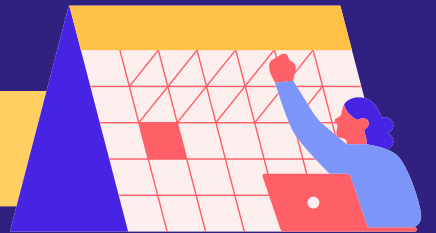


Soryoung

Soryoung was the President of Drama Society, 2024-2025.

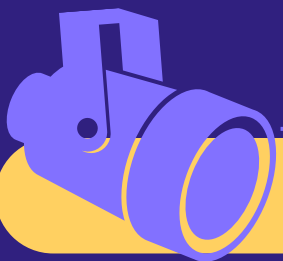
Despite her hectic schedule as a law student, Soryoung oversaw a record-breaking year for the Drama Society. If Drama's yearly 4 full-scale productions and a 24-hour Musical weren't impressive enough, this year they introduced LSE's first ever Arts Ball, an Original Writing Festival, an Edinburgh Fringe Show, and a trip to Berlin!

Organising Events



It is so so important to be on top of your planned schedule of events. If you are not super aware of all the SU-required steps for each kind of event, make sure you brush up on this as it is absolutely vital! The SU is key to making all your dreams a reality – but they can only help you if you help yourself first. Submit your risk assessments and event forms in time with their deadlines, actually read through the emails and guidance they send you, and keep them updated at all times!

With regards to getting higher levels of attendance, I actually found that flyering is a lot more effective than you'd think. For those who are not so inclined to half-accost people in the Hare Krishna line, the SU lets you book out stalls just outside their building, which is great for foot traffic! I think there are so many people at LSE who would be interested in your society and its events – they probably just don't know they exist.



Managing a Committee

Bigger committees mean more possibilities for events, because you have more hands on deck. However, it also means more possibilities for disagreements and miscommunications. Each person has their own style of conflict management, but I prefer to do my best to be informed about any disagreements, and to identify when it would be best to intervene, and when it would be better to take a step back. I feel like it's generally important not to look like you're ever taking sides, because your committee can only function well if you trust each other and are able to work together, even after disagreements.

There's also going to be a seemingly never-ending series of tasks, all the time. Delegate as much as possible, but always be prepared to do the things no-one else wants to do. It has to be someone, and it will pay itself back in the end.

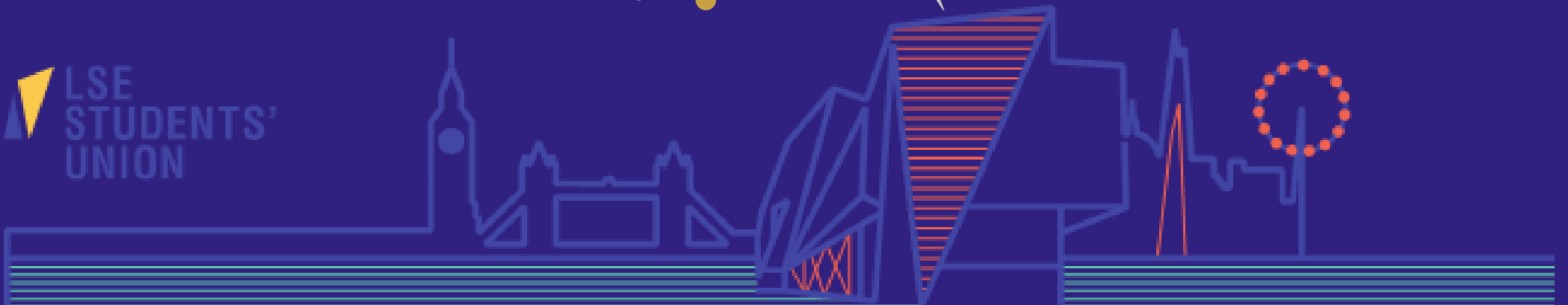
Maintaining a Fair Environment



As President, it really is up to you to set the standard for the rest of your committee about how the society is going to run. You might be at the top of the chain now, but try and remember your experiences of the society when you first joined. Was there anything you thought should have been different about the social culture or the way things were run? In my opinion, this is the most important thing about running a society; the success of events or levels of membership are not necessarily things within your control, but you can always make sure your society provides a fair and welcoming environment that you can be proud of facilitating. I can honestly say that of all the feedback I received about my society this year, these are the kind of comments that mean the most.

Enjoy Yourself!

Being President can be a massive responsibility, but if you ever find yourself feeling demotivated or overwhelmed, don't forget that (hopefully!) the reason you took on this responsibility is because you have a real passion for what the society involves. Yes, you're in charge, but you're also a member of the society, and you deserve to have a good time too! Make sure you're letting yourself enjoy the events and socials your hard work has produced – you've earned it.



Nick

Nick has been the President of the German Society for two years. During this time, he's overseen a committee of more than 40 people, who serve a community of 300 members.

The society's annual flagship, the LSE German Symposium, is the largest German student-led conference in the UK, attracting over 2,000 attendees and 30+ speakers annually. The society also work hard to organise their Oktoberfest celebrations, the German Career Dinner, monthly pub visits and many speaker events.

Advice for Incoming Committee Members

If you're reading this, you've just stepped into a very exciting role at one of the many amazing societies at LSE - so first of all: enjoy it! Leading a society was by far the best part of my time at university. I met incredible people, made close friends I didn't know before, and had more fun than I ever imagined. It's a challenge, yes - but one that's deeply rewarding.

Be bold and aim high.

It might sound cheesy, but seriously: reach for the stars. You'd be surprised what's possible when you ask. The power of a motivated student society is real - people want to speak to students and many would love to come and speak at or attend your events, support your cause, and get involved. Some of our biggest highlights came from bold invitations that paid off. It takes work and persistence, but it's so worth it.

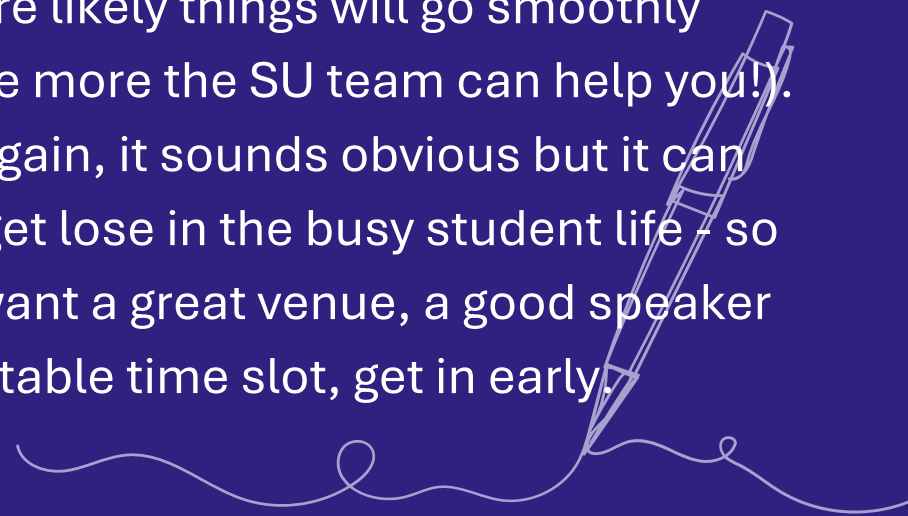
Make your team a team.

Have regular meetings *in person* - on campus. Online chats are great, but nothing builds motivation and trust like being in the same room. You'll get more done, and you'll build friendships that carry your society through the ups and downs.



Plan ahead.

Future you will thank you! Whether it's booking rooms or getting event approvals, LSE is a busy place. The earlier you plan, the more likely things will go smoothly (and the more the SU team can help you!). Once again, it sounds obvious but it can easily get lost in the busy student life - so if you want a great venue, a good speaker or a suitable time slot, get in early.



Don't go it alone.

Talk to other societies. Collaborate where you can. When you bring people together - especially across interests or disciplines - you create something even bigger. You'll also pick up advice, support, and ideas you wouldn't get otherwise. But most of all: *have fun*. You only get to do this once - make the most of it.

Advice from other committees!

“Weekly executive committee meetings are indispensable - schedule these for every Monday so you can plan ahead for the week and take care of last minute issues.”

“Manage your time and expectations well, don't be too stressed, you guys got this. It may feel like a lot of work physically and mentally at first but it will get better once you find your rhythm.”

“Stay united, organised and communicative. Talk to your subcommittee members, make sure that everyone knows what they are doing, keep track of all meetings, finances and event statuses so that everyone is on the same page. It is so important to make sure everyone knows what is happening and what to do.”

“As a leader, you need to be at the centre, not in the sense of controlling everything, but to bring everything together by listening, supporting their passions, and encouraging creativity. Finding this balance is your main responsibility.”

“There's a lot of potential for societies to connect that are currently unexploited. Text other societies and organise collaborations.”

“Plan your events and activities early - it makes it really stressful when things are left to the last minute!”

“The most successful events were the ones we had fun organising. This is very important: have fun and do events that you would like to engage in as a member. Good luck for the next year. It is going to be lovely, exciting and rewarding!”

“Don't underestimate the power of social media- all platforms.”

“Always prioritize feedback from your members! Remember who you are representing and why you ran for the role in the first place”

“Working in a team >>> working solo. Always.”

