



# LSESU Sport and Rec

STUDENT LEADERS CONFERENCE 2024

THINK  
**BIG**

 **LSE  
STUDENTS'  
UNION**



# Welcome and Congratulations!





# AGENDA



STUDENT LEADER  
CONFERENCE

**01. Intro to LSESU Sport and Rec**

**02. The year ahead and key dates**

**03. Meet the team! How to contact us, and how we can help**

**04. Your roles and responsibilities**

**05. Essential bits**

**06. Welcome Fair 2025**



# Today



STUDENT LEADER  
CONFERENCE

## SCHEDULE

	09:30 - 09:50	10:00 - 10:30	10:30 - 11:20	11:30 - 12:20	12:30 - 13:00	13:00 - 13:50	14:00 - 14:50	15:00 - 15:50	16:00 - 16:30	16:30 - 16:45
Venue (Level -2)	Societies Arrivals and Registrations	Societies: Welcome Talk and Introduction*	Leadership: Cultivating World Class Societies	Event Planning Essentials*	Marketing, Outreach and Comms*	Lunch Break  Free Pizza provided in the 1st Floor Cafe  Free high-quality headshots (location TBC)	Freedom to Speak: Navigating External Speakers & Free Expression*	Safety First: Managing Risk*	Finance and Sponsorships: Back to Basics*	Closing Remarks and Final Questions
6th Floor Cafe (Level 6)	Sports Club Arrivals and Registrations	Sports Clubs: Welcome Talk and Introduction*	Sports Clubs: Leading World Class Groups	Working with Alumni: Relations, Engagement and Outreach (With LSE Alumni Centre)	Safe Travels: Planning Successful Trips		From Society to CV: Showcasing Your Experience (With LSE Careers)		Support for Student Leaders: Wellbeing, disclosures and signposting (With the SU Sabb Team)	
Hall Carpenter Space (Level 3)					Making an Impact: Exploring Volunteering Opportunities (With LSE Volunteer Centre)		Elevate Your Entrepreneurial Skills (With LSE Generate)	Navigating Difficult Conversations (With the LSE Faith Centre)		
ARC (Level 1)							Running Events in the Saw Swee Hock Building			

# Housekeeping



- Please ensure you scan the correct individual ticket at each session, as this is how we will monitor attendance.
- Quiet spaces around the SU include the 3rd Floor Community Space, 1st Floor Café, 6th Floor Terrace and Venue Mezzanine.
- Toilets on B-2 and B-1 and Floor 5 levels
- Water Fountains on Floor 6 and B-2.
- If the fire alarm goes off, please evacuate out of the nearest Fire Exit. Our Fire Assembly point is outside the LSE library.
- The Three Tuns is open to all this evening.
- Please talk to our team if you have any questions or problems throughout the day!

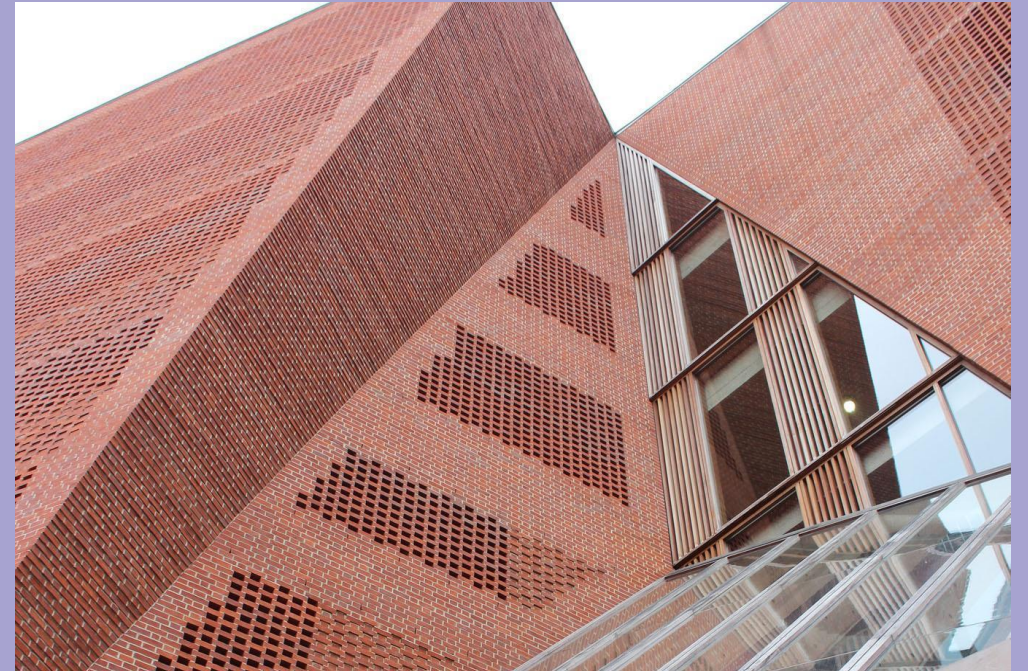


# The Basics



# LSESU

- A not-for profit organisation led by LSE students
- All LSE students automatically become LSESU members when they enrol
- Independent from LSE
- All LSESU Clubs and Societies fall under the SU





# Key Policies & Regulations



## LSESU Bye Laws

- Determine what the SU does and how we do it.
- Take account of all legislation that applies to the SU.

### ***Bye Law 5 – Student Activities:***

- *500: "LSESU operates student activities for the purpose to develop community within the School, build networks of support for its members and offer personal development outside of their academic work through a shared interest or physical pursuit."*

## Student Group Constitution

- Key governing document: Outlines how student groups should be governed.
- How Student Groups should operate, sets core activities for the year, roles in the committee and important guidance for the year ahead.



# Code of Conduct & Regulations



## Student Activities Code of Conduct

- LSESU is committed to promoting an *inclusive, collaborative* and *respectful* environment where individuals are *treated with fairness and respect*. LSESU is committed to a zero-tolerance approach to all forms of discrimination, bullying and harassment.
- Code of Conduct sets out the standards of conduct and behaviour expected of all members.
- Attached to all memberships 25/26.

## LSESU Student Group Regulations Agreement

- Behaviours and conduct that LSESU expects from student groups and what student groups can expect in return from LSESU.
- By becoming an affiliated student group to LSESU, you agree to these set of regulations.
- All LSESU Student Groups must sign to say they are all in agreement with this every year.



# Key Dates



STUDENT LEADER  
CONFERENCE

## 01. 31<sup>st</sup> May

### Admin Submission

- Membership price proposal
- Constitution
- Sign Student Group Regulations

## 02. August 1<sup>st</sup>

### Equipment Audit

Please let us know everything your group owns- form being sent

## 03. August 1<sup>st</sup>

### 2025/26 Memberships Live

## 04. 1<sup>st</sup> August '25

### Essential Admin

- Risk Assessment
- Budget
- Moodle modules
- Development plan

## 05. August

Development meetings

## 06. Deadlines for Flagship / Trip Forms

AT: 1<sup>st</sup> Sep

WT: 31<sup>st</sup> Oct

ST: TBC

## 07. September

BUCS and LUSL Captains training.

## 08. 23<sup>rd</sup>, 24<sup>th</sup>, 25<sup>th</sup>

### September '25

Welcome Fair



LSE  
STUDENTS'  
UNION

# LSESU Sports Team



**Alex**

Sport and Recreation Manager



**Simone**

Operations & Facilities  
Manager



**Dan**

Physical Activity &  
Wellbeing Coordinator



(starting August)  
Sports Coordinator



**Patrick**

Gym Supervisor



Operations & Facilities  
Coordinator

## Student Staff:

Ava  
Mabel (BUCS)  
Zoe (Summer  
cover)



# LSESU Societies Team



**Grace**

Acting CEO/ Head of Student Communities and Partnerships



**Warren**

Societies Manager



**Madeleine**

Societies Coordinator



**Abbie**

Senior Societies Coordinator



**Aliza**

Student Opportunities Coordinator

## **Plus 4 Student Staff:**

- Kelly
- Lily
- Giada
- Tanzila

# Activities and Communities Officer 2025-26

Su.activitiescommunities  
@lse.ac.uk

Oversees the development of your student  
groups and represents your views!

*vote*  
**SACHIN 4**  
**ACTIVITIES & COMMUNITIES**



**MAKE ACTIVITIES WORK**

1. STREAMLINE CLUBS & SOCS ORGANISING
2. CREATE 'LSESU EVENTS' APP TO IMPROVE COMMS FOR ALL
3. EXPAND PARTICIPATION FUND & CREATE NEW BERRYLANDS TRAVEL FUND

**STAMP IT OUT**

1. STAMP OUT DISCRIMINATION AT LSE, FOCUSSED ON ISLAMOPHOBIA, ANTISEMITISM, THE MENTAL HEALTH CRISIS & SEXUAL VIOLENCE
2. MANDATE FULLY TRAINED WELFARE OFFICERS FOR ALL CLUBS/SOCS
3. FIGHT FOR DIVESTMENT FROM WEAPONS MANUFACTURING, ARMS TRADE & FOSSIL FUELS

**UNLEASH AND EMPOWER**

1. PROTECT FREE SPEECH AND RIGHT TO PROTEST ON CAMPUS
2. FUND CLUBS & SOCS TO RUN TASTER SESSIONS THROUGHOUT THE YEAR
3. STREAMLINE FUNDRAISING THROUGH BETTER ACCESS TO CARD READERS.

**VOTE HERE!**



**STRONGER TOGETHER WITH SACHIN!**  
**@VOTESACHIN4ACO**



# AU President



Welcome to the LSE Athletics Union 2025/26

The AU represents all LSE sports clubs while championing a supportive and inclusive culture across the sports community.

We're here to support clubs with any challenges they face, and we also run the weekly Sways and major events on the LSE social calendar.

Stay connected with us on our Instagram  
[@lseathleticsunion](#)

AU memberships will be available from August- gets you access to large events



**Dev Patel**



# How we can help

- Planning Events
  - Planning Trips and Tours
  - Risk Management
  - Group Development
  - Processing Finances
  - New Group Formation
  - Contract/Sponsorship Signing
  - BUCS Fixture Changes
  - BUCS Events
  - LUSL support
  - Elections
  - Sponsorships
  - Signing Contracts
  - Training
  - General Enquiries
  - Club development!
  - New ideas
- ...and lots more!**



# What is classed as an event?



- Anything that is not your already approved activity e.g. Training and BUCS/ LUSL fixtures e.g external friendlies.
- Anything which will entail food and beverage.
- Reminder- no spirits can be expensed
- Any club dinners.
- Any event collabs with other clubs.



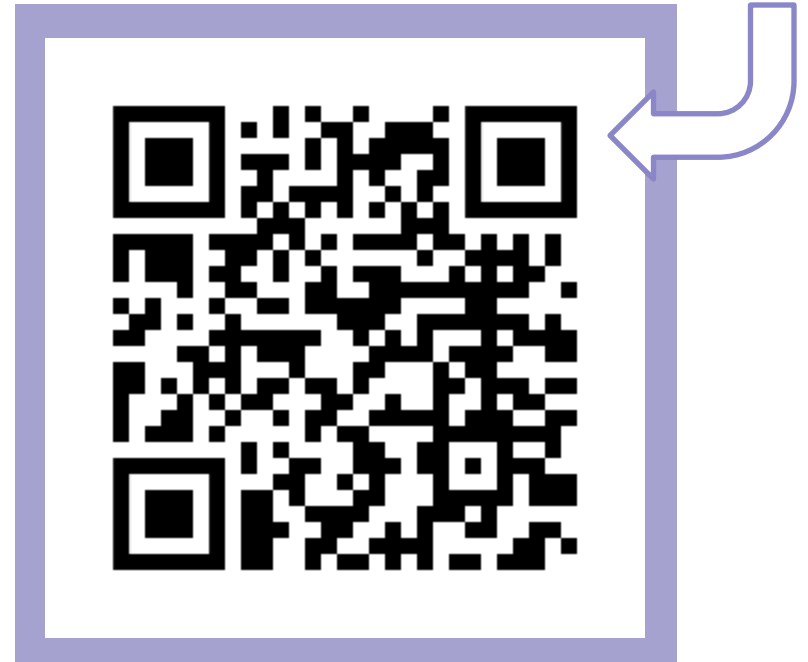
# Committee Hub



- Section of the SU website dedicated to Committee Members
- It includes everything you might need, including:
  - Information on SU processes
  - Event forms
  - Risk assessment and budget guidance
  - Finance support and all relevant forms
  - Trip information
  - Forms to book a Sheffield Street Stall
  - Health and safety information

...And much more!

**Scan here**



# Contacting Us



## Teams!

Main comms- quick

## Location

3rd Floor, Saw Swee Hock

The team's core office  
hours are 10am – 4pm  
Monday – Friday

## Email

[su.sport@lse.ac.uk](mailto:su.sport@lse.ac.uk) - sports club enquiries  
[su.marshall@lse.ac.uk](mailto:su.marshall@lse.ac.uk) - anything related to  
facilities

## Drop-Ins

Weekly 15-minute sessions with the Sports  
Coordinator.

Bookable through Student Hub.

Please note: Dates and times for 25/26 

# TEAMS



Main way to communicate  
Quick replies



Sports Coordinator and Facility Coordinator

Creating a sports clubs group for updates and posts

# EMAILS



All Comms sent to clubs emails  
IF YOU DON'T HAVE ACCESS- EMAIL  
[SU.SPORT@LSE.AC.UK](mailto:SU.SPORT@LSE.AC.UK) ASAP!



Outlook

Confidential info

# Marshall team communications

- New booking agreement outlining all details on storage etc.
- Meeting with team at start of year to set expectations
  - Storage information etc.
    - Conduct
    - Cancellations
    - Missing bookings
    - Reporting issues
    - Max capacities
  - Sessions in Summer term
- Provide clarity- not income (but we need to prioritise this with externals)

## IMPORTANT CHANGE

Facility Coordinator  
will be main contact  
for changing slots,  
additional slots,  
booking any facility  
space on campus

# Promotion and celebration



WE'VE BEEN RUBBISH AT THIS!



Please share images and results on teams- we will  
share and tag the Uni!  
Team of the Week  
Any other ideas here?





# Essential Online Training

## Moodle training courses to be completed before September

- Sports club training
  - BUCS/LUSL
- Other processes
- Compulsory based on your role e.g. treasurer  
finance- you will be contacted directly

# BUCS/ LUSL Captains Training

## Essential for ALL PRESIDENTS and TEAM CAPTAINS

- September- more info to follow
- BUCS/LUSL- running a team
  - Bucs play
  - Important regs
  - Fines etc.
  - Issues etc.



**LUSL**  
**LONDON UNIVERSITIES**  
**SPORTS LEAGUES**

# Drop ins

**In person meetings**  
**Managed through student hub**  
**Days and Times tbc**

# Development Meetings

- Dedicated sessions tailored to your requirements.
- Focused on events, finances, training, coaches and general enquiries
  - 1:1 meetings with Sports Coordinator
  - Risk assessment, budget, constitution and development plan

Throughout August



# Memberships



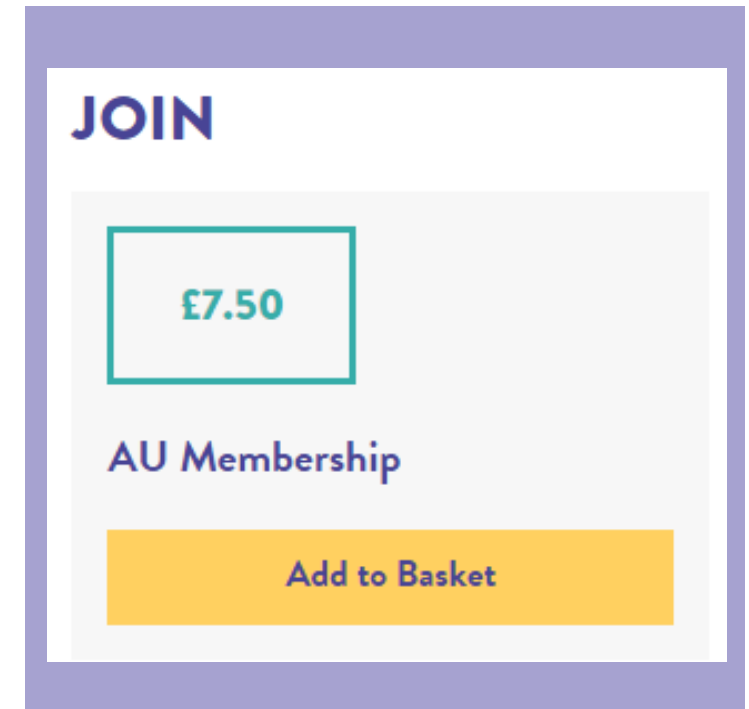
STUDENT LEADER  
CONFERENCE

Please ensure anyone who is part of your club purchases membership. Essential for insurance purposes and fair service to students.

Once people have bought membership, they:

- Will receive any communications sent out by your club through the website
- Are eligible to run and vote in elections
- Have access to member-only tickets and discounts
- Are covered by SU insurance when taking part in your activities

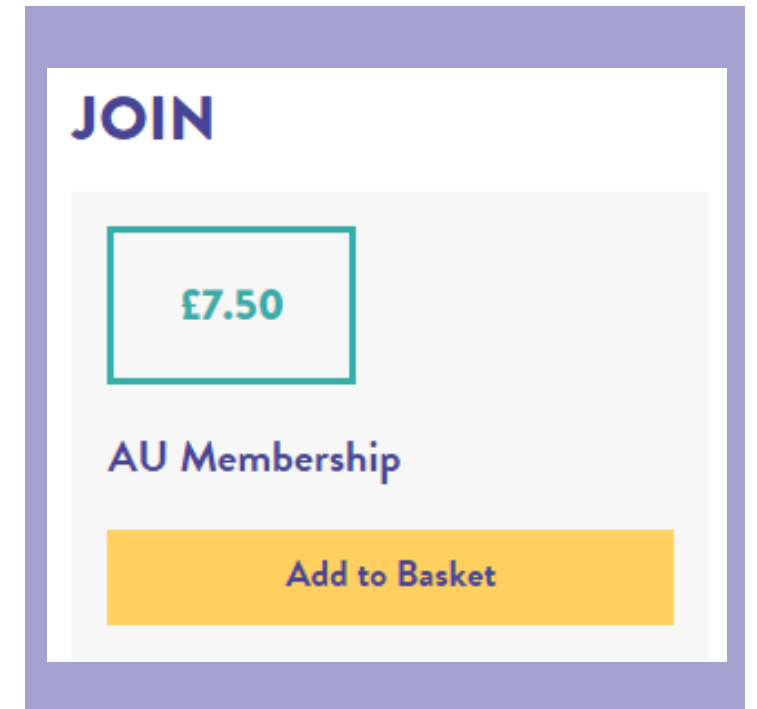
Essential source of income for your group!



# Associate Memberships

## Associate Membership

- You can also apply to sell Associate Memberships to LSE staff, students from other uni's and alumni.
- The price of these must be higher than Standard Membership, to ensure current students get the best deal!
- London Film School & New York University (NYU) partnerships (no BUCS entries but can compete in LUSL with written agreement form both teams)
- LSE Staff, Alumni and Students from other institutions only
- Apply on LSESU Memberships page-[Memberships](#)
- Can only sell once approved- must be done yearly



# Elections



- All core committee must be elected through SU elections (President, Treasurer, Secretary).
- The SU will automatically run these for you and will reach out if we need any info from you e.g. more positions.
- These are run online in March
- Second election in October
- Non-core roles can be included in the SU elections, or you can democratically elect them yourself. Please ensure all members have a fair and equal chance!
- To co-opt someone in- drop us a message



# Newsletter



Sent weekly from the Clubs and Socs Team to your personal LSE email address.

Includes:

- Important updates
- Upcoming dates and deadlines
- Exciting opportunities
- Celebrations of recent events and achievements

Please share any relevant information with your members

# Award and Recognition



STUDENT LEADER  
CONFERENCE

## AU Sports Awards

- Hosted at the AU Ball

**STARS-** revamped and to be shared



# Handovers



All 2025/26 committees will be asked to prepare a handover.

These include:

- Passwords
- Information on finances
- Feedback on this year's events
- Inventory
- Advice and top tips



# A few key bits



## Communication

- Liaising with SU where necessary
- Ensuring regular communication with and between your fellow committee

## LSE/ LSESU Regulations

- Respecting timeframes
- Follow policies and procedures
- Submit and update all documents
- Awareness of the code of conduct/ student group regulations

## Inclusivity

- Ensuring your activities are inclusive and welcoming
- Wide ranging offer where possible

## Safety

- Ensuring activities are as safe as possible
- Follow risk assessments

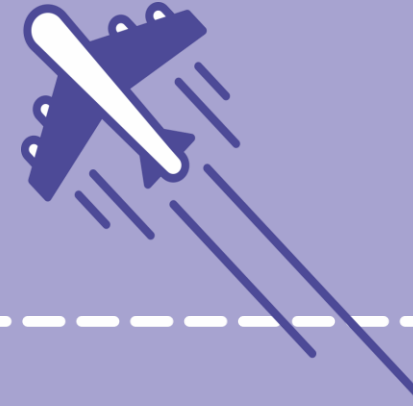
## Reporting

- Complaints/ issues- here to help!
- Disputes
- Reporting incidents and injuries

## Overseeing Your Finances

- Managing your budget
- Ensuring legitimacy of expense claims

# Welcome 2025

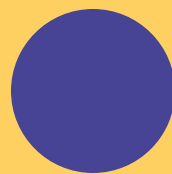


23<sup>rd</sup>, 24<sup>th</sup>, 25<sup>th</sup>  
September '25  
Welcome Fair

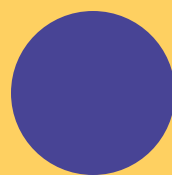


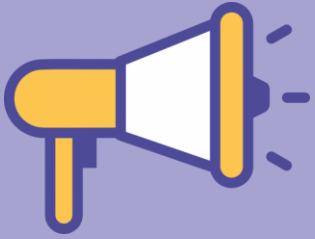
## Recruitment! GDPR reminder





# BREAK





# AGENDA

01. Health, Safety and  
Safeguarding

02. Affiliations

03. New initiatives

04. Funding and Training  
allocations

05. Add Victor





# Health, Safety and Safeguarding



# RISK ASSESSMENTS REVAMPED!

- Each club/ society has an annual risk assessment
- Template for support
- Covers all activities- training, matches, socials, trips, Emergency Action plan, Safeguarding under 18s
- Updated for each event (if something changes), not a new risk assessment

**LESS ADMIN, BETTER RISK ASSESSMENTS, SAFER SESSIONS**

		Potential Severity Rating			
		Minor	Moderate	Significant	Catastrophic
Likelihood severity occurs	Very Likely	Moderate	High	Extreme	Extreme
	Likely	Low	Moderate	High	Extreme
	Unlikely	Very Low	Low	Moderate	High
	Rare	Very Low	Very Low	Low	Moderate

# FIRST AID TRAINING

## First Aid Kits

Your club needs a first aid kit for every team/ group where you are first aider

Restocking- your responsibility, ask us for any items- we will purchase

Clubs that need one

Barbell, M Basketball, W Basketball, BJJ, Cycling, E+P, M Football (7), Lacrosse, Muay Thai, Padel, Pole, Skate, Taekwondo, Volleyball (2), Wakeboarding



## Your responsibility to ensure First Aid presence at every session

### LSESU's first aid provision

Berrylands- Medics at matchdays on Weds and Sats for 2pm kick offs- outside of these times you need 2 first aiders per team

Marshall sports facility- all facility staff are first aid trained

Coaches require first aid qualification

First Aid training is under way- you will have been contacted

Requirement to have these people trained

Accredited Level First Aid At Work qualification



# Coaching Compliance

## COACH/ INSTRUCTOR RECRUITMENT PROCESS

See Sports Club documents on LSESU website

Coaches need

DBS, PL (minimum £5mill), SLA (contract), Qual, Reference, First Aid qual

This year- no payment until they are approved on our system

DO YOU NEED YOUR COACH TO BE FIRST AID TRAINED? Email  
[su.sport@lse.ac.uk](mailto:su.sport@lse.ac.uk) ASAP

[Sports Club Documents](#)



# Match Official Compliance

Reviewing with team on whether to bring this administration in house

We need some awareness of who has been booked and they are qualified

Essential they are qualified as per league regulations



# Welfare Officer- Your Clubs Safety and Support Contact!

- A committed club member with a focus on safety, wellbeing and inclusion
- First point of contact for members with health, safety or safeguarding concerns 
- Helps make sure sessions are safe, inclusive and well-managed.
- Supported by the SU Sport Team 

# What Does a Welfare Officer Do?

-  Ensure first aid cover and kits are in place for sessions.
-  Make sure incidents and near misses are reported.
-  Be the go-to person for club members with concerns.
-  Act as main point of contact for SU staff on health, safety & safeguarding.
-  Promote an inclusive and respectful culture in your club.
-  Be trained in first aid (just ensure there is first aid presence)
-  Investigate safeguarding concerns (report/pass them on to the SU)
-  Be an expert (listen, support and signpost)
-  Manage all H+S docs (work with the committee and SU to create these as a club)
-  Handle disciplinary issues (report to SU)
-  Solve problems alone (speak to SU)



## ➔ Support you'll get and why it's worth it

### Support provided

NSPPC accredited 3-hour safeguarding course

First aid training opportunities

Templates for kit checks and incident reporting

Named contact at SU

Drop-in support throughout the year

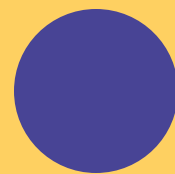
### Skills for your CV

Leadership & communication

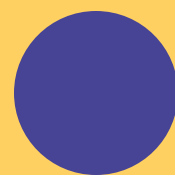
Safeguarding & welfare awareness

Health & safety coordination

Experience in team management



# Affiliations



# Affiliations



Most clubs will need to affiliate with their NGB (National Governing Body) to be:

- 1) Recognised as a club
- 2) Adhered to their health and safety
- 3) BUCS compliant
- 4) Considered for BUCS events and competitions.

These will need to be done over the summer period, we will send more information about this soon.

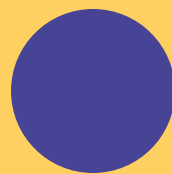
Some individual sports will require you to be signed up to specific sporting NGBs or ranking sites



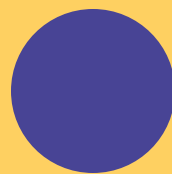
# BUCS & LUSL



- Team Entries are now finalised. Leagues will be confirmed soon.
- Any missing 25/26 team entries need to email [Su.Sport@lse.ac.uk](mailto:Su.Sport@lse.ac.uk) as soon as possible.
- Championships/Individual entries will be emailed over the year.
- We are not notified when an individual entry is submitted- you must let us know!



# New Initiatives



# Coaching and Officiating Development Opportunity

Launching 25/26!

Application process through SUF- information will be on the SUF page- live over Summer!

Submit an application for the panel to review

✓ Improve the Quality of Sessions

Help deliver consistent, structured, and more engaging club activity.

✓ Support Club Safety

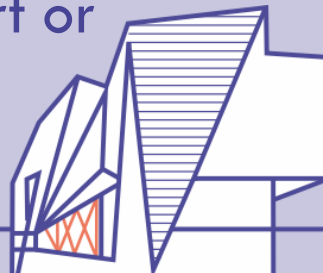
Gain knowledge in risk management and health & safety through accredited training.

✓ Develop Your Leadership & Confidence

Learn how to plan sessions, communicate effectively, and manage group dynamics.

✓ Boost Your CV

Recognised coaching and officiating qualifications are valuable for future careers — in sport or beyond.





### LSESU Student Coach Level Agreement

#### Personal details

Full Name of Student applying for the course	
Email of student applying for the course	
Area of work (coach, instructor, department sport sessions, inclusive sport sessions, refereeing, umpiring)	
Name of Club/ Society (if applicable)	

#### Schedule

This Agreement is made on [INSERT DATE] between [INSERT STUDENT NAME] and [INSERT STUDENT GROUP NAME] and London School of Economics Students' Union (LSESU) between the dates [INSERT DATE] and [INSERT DATE] (end date should span the full time the students will support the club and must be before student has graduated).

#### Course Details

I understand that this agreement covers the cost of the [Insert Course Name] at an agreed value of £[INSERT Amount], funded by the Students' Union.

After completing the course, I will send evidence of the qualification to the Sport and Rec team to document.

#### Delivery Commitment

I will contribute a minimum of [INSERT X hours] to supporting sports delivery at LSESU.

I will log my hours of delivery.

This will include: (please highlight all that apply- if it is one of these, that is fine)

- Leading or assisting training sessions
- Leading or assisting match days
- Refereeing/umpiring fixtures
- Assisting a paid coach in training
- Assisting a paid coach in matches

#### Club President Acknowledgement

My Club President confirms that this support club sport delivery and supports this application.

If this is application is for a president, this approval must be another core committee member.

#### Withdrawal or Non-Participation

If I am unable to meet the above commitments, I will inform the Sport and Rec team as soon as possible. I understand that failure fulfil the commitment may affect future club funding opportunities in this area and incur repayment of costs from the individual attending the course and club.



### Declaration

#### Student applying for the course

I confirm that the information on this form is correct, agree to the terms and condition of this SLA.

Name	
Signature	

#### President (or other committee member if president is applying)

I confirm that the information on this form is correct, agree to the terms and condition of this SLA.

Name	
Role	
Signature	

#### LSESU staff member

This contract is only approved once signed by a member of staff from LSESU.

Name	
Signature	



# Coaching courses!

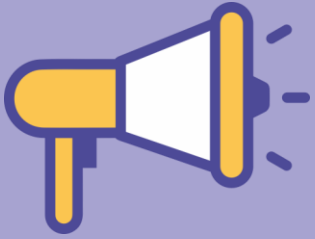
Club	Available Courses	Links - More Information	Requirements	Date
Athletics	Leading Athletics	<a href="#">Leading Athletics   England Athletics Coaching Courses</a>	Must be 14+	<a href="#">Book your place here!</a>
Athletics	Coaching Assistant	<a href="#">Coaching Assistant   UK Athletics Coaching Training</a>	Must be 8+	<a href="#">Book your place here!</a>
Athletics	Coaching Assistant + Athletics Coach	<a href="#">Coaching Assistant and Athletics Coach - England Athletics</a>	N/A	<a href="#">Book your place here!</a>
Athletics	Leadership in Running Fitness	<a href="#">Leadership in Running Fitness   England Athletics Coaching</a>	Must be 12+	<a href="#">Book your place here!</a>
Badminton	Foundation Award in Coaching Badminton	<a href="#">Coaching Pathway   Badminton England</a>	Must be 16+	N/A
Badminton	Coach	<a href="#">Coaching Pathway   Badminton England</a>	Must be 18+ and hold UKCCC Level 1 or Foundation Award in Badminton	N/A
Badminton	UKCC Level 3 Certificate for Head Coach in Badminton	<a href="#">Coaching Pathway   Badminton England</a>	Requires completion of several pre-course learning modules	N/A
Basketball	London Coaches Program	<a href="#">London Coaches Program   Basketball England</a>	Must be aged 16 - 30 + Live in 1/32 London Boroughs	<a href="#">Apply now for 2025!</a>
Basketball	Basketball Coaching Assistant	<a href="#">Introduction to Coaching Basketball Award (previously Level 1) - Sport Structures</a>	Must be 14+ and speak English	<a href="#">BF A Coach   Basketball England</a>
Basketball	Coaching Resources	<a href="#">Coaching Resources   Basketball England</a>	N/A	N/A
Basketball	Referee	<a href="#">BF A Referee   Basketball England</a>	Depends on the level Referee Qualification	N/A
Basketball	Table Official	<a href="#">BF A Table Official   Basketball England</a>	Depends on the level Table Qualification	N/A
Basketball	Statistician	<a href="#">BF A Statistician   Basketball England</a>	Must be a Basketball England member	N/A
BJJ	Level 1 Award in Assistant Coaching	<a href="#">UKBJA Level 1 Award in Assistant Coaching - Sport Structures</a>	Must be 16+, hold a minimum of blue belt BJJ, be a member of UKBJA	N/A
BJJ	Level 2 Certificate in Coaching	<a href="#">1st4Sport Level 2 Certificate in Coaching Jujitsu - Sport Structures</a>	Must be 18+, have a minimum purple belt in BJJ, be a member of UKBJA	N/A
Boxing	Level 1 Coach	<a href="#">Level 1 Coaching Courses - England Boxing</a>	Must be 17+	N/A
Boxing	Level 2 Coach	<a href="#">Level 2 Coaching Courses - England Boxing</a>	Must be a registered member of an England Boxing affiliated club, have a safe	N/A
Boxing	Volunteer	<a href="#">Volunteering - England Boxing</a>	N/A	N/A
Crickets	ECB Support Coach	<a href="#">England and Wales Cricket Board (ECB) - The Official Website of the ECB</a>	Must be 16+ and wishing to support qualified coaches	N/A
Crickets	ECB Foundation Coach	<a href="#">England and Wales Cricket Board (ECB) - The Official Website of the ECB</a>	Must be 17+ and wishing to become a qualified coach	N/A
Crickets	ECB Core Coach	<a href="#">England and Wales Cricket Board (ECB) - The Official Website of the ECB</a>	Must be 17+ and have experience of playing or coaching cricket	N/A
Cycling	Cycling Coach	<a href="#">Coaching - British Cycling</a>	N/A	<a href="#">Courses dates out all the way to Jan 26</a>
Cycling	Volunteer	<a href="#">Vouneer</a>	N/A	N/A
Equestrian	Different Paths for Equestrian Coach	<a href="#">Introduction to coaching - British Equestrian</a>	N/A	N/A
Fencing	Intro to Fencing Coaching	<a href="#">Introduction to Coaching Fencing - BRITISH FENCING</a>	Must be 18+ and have 12+ months experience of fencing + valid BF membership	<a href="#">Register your interest on the site!</a>
Fencing	Coaching/Fencing Level 2	<a href="#">Coaching/Fencing Course L2 - BRITISH FENCING</a>	Must be 18+, have BF membership, + level 1 BF award	<a href="#">Register your interest on the site!</a>
Fencing	Weapon Specific Course (L3)	<a href="#">Weapon Specific Course L3 - BRITISH FENCING</a>	Must be 18+, have BF membership, level 2 BF award	<a href="#">Register your interest on the site!</a>
Football	Grassroots Football Coach	<a href="#">Introduction to Coaching Football   England Football Learning</a>	Must be 16+, and be first aid/safeguarding trained	N/A
Football	UEFA C Licence	<a href="#">UEFA C Licence   England Football Learning</a>	Must be 16+, have completed level 1 coaching, have first aid/safeguarding	N/A
Football	First aid in Football	<a href="#">Introduction to First Aid in Football   England Football Learning</a>	Must be 16+	N/A
Football	Safeguarding For All   England Football Learning	<a href="#">Safeguarding For All   England Football Learning</a>	Must be 14+	<a href="#">Get started here!</a>
Futsal	Futsal - laws of the game - Grassroots Referee	<a href="#">Guide to the futsal laws of the game   England Football Learning</a>	Must be 14+ - Note, this course does not make you a qualified referee	<a href="#">Sign In - To get started</a>
Futsal	Futsal Coach - National Futsal Course	<a href="#">National Futsal Course   England Football Learning</a>	Must have completed level 1 coaching in football + online modules, have fi	<a href="#">Sign up for updates</a>
Golf	ASQ Level 1 Award in Coaching Golf	<a href="#">ASQ Level 1 Award in Coaching Golf</a>	<a href="#">More info here!</a>	<a href="#">More information here!</a>
Golf	ASQ Level 2 Certificate in Coaching Golf	<a href="#">ASQ Level 2 Certificate in Coaching Golf</a>	<a href="#">More info here!</a>	<a href="#">More information here!</a>
Hockey	Developing Coaches	<a href="#">Deliver - Coach   Develop   England Hockey</a>	N/A	<a href="#">Book here!</a>
Hockey	Coaching Resources	<a href="#">Great Britain Hockey's Online Training Hub</a>	N/A	N/A
Hockey	Umpire Training	<a href="#">England Hockey's Online Training Hub</a>	N/A	<a href="#">Book here!</a>
Lacrosse	Fundamentals of Coaching	<a href="#">Introduction to Coaching - England Lacrosse</a>	Must be year 10 or above	<a href="#">Sign up!</a>
Lacrosse	Field Coaching	<a href="#">Coaching Field Lacrosse - England Lacrosse</a>	Must be 18+ and have prior knowledge of lacrosse	<a href="#">Find Events, Courses   Sport 80</a>
Netball	England Netball Level 1 Course	<a href="#">England Netball   England Netball Level 1 Course</a>	Must be 16+	<a href="#">Click here to book</a>
Netball	England Netball Level 2 Course	<a href="#">England Netball   England Netball Level 2 Course</a>	Must be 18+, have completed level 1 course, undertaken safeguarding and fi	<a href="#">Click here to book</a>
Netball	England Netball Level 3 Course	<a href="#">England Netball   England Netball Level 3 Course</a>	Express Interest	<a href="#">Express Interest</a>
Padel + Tennis	LTA Coaching Qualifications Pathway	<a href="#">Apply for LTA Tennis Coaching Qualifications</a>	See the relevant pathway	N/A
Padel + Tennis	Tennis Coach Development Pathway	<a href="#">Tennis Coach Development Plan 2021-2023   LTA</a>	See the relevant pathway	N/A
Pickleball	Coaching Education Pathway	<a href="#">PICKLEBALL ENGLAND Education Pathway - Pickleball England</a>	See the relevant pathway - Beginners start on level 1	N/A
Pickleball	See this page if interested in Officiating	<a href="#">Coaching - Pickleball England</a>	See page for information	N/A
Pool + Snooker	Contact the association to become a Referee - Pool	<a href="#">Taking Part</a>	See page for information	N/A
Pool + Snooker	Coaching - Snooker	<a href="#">Coaching - EPSB</a>	See page for information	N/A
Pool + Snooker	Refereeing - Snooker	<a href="#">Refereeing   EPSB   Snooker and Billiards</a>	N/A	<a href="#">Express your interest on the site!</a>
Rowing	Umpire Training	<a href="#">Umpiring - British Rowing</a>	Must be 18+, don't need to be a good rower or cox to be a great umpire	<a href="#">Register your interest on the site!</a>
Rowing	Coach Training	<a href="#">The Coaching Stream - British Rowing</a>	Requirements vary per qualification	<a href="#">See here for Coaching Qualifications De</a>
Rowing	Session Coach (Level 2)	<a href="#">Session Coach (Level 2) - British Rowing</a>	Must be 18+ and a British Rowing member	N/A
Rowing	Club Coach (Level 2)	<a href="#">Club Coach (Level 2) - British Rowing</a>	Must be 18+ and a British Rowing member	N/A
Rugby	Level 1 Coaching Course	<a href="#">Coaching Course Level 1</a>	Must be 16+ looking to work with Primary Rugby League Teams (page 7-11)	<a href="#">See page for available courses</a>
Rugby	Level 2 Coaching Course	<a href="#">Coaching Course Level 2</a>	Must be 16+ - Level 2 allows you to operate within a 13-a-side community	N/A
Rugby	Level 3 Coaching Course	<a href="#">Coaching Course Level 3</a>	Need at least 2 years coaching experience in Rugby League, coach several	N/A
Rugby	Become a Match Official	<a href="#">Become a Match Official</a>	The RFL welcomes applications from everyone	<a href="#">See the page for more information</a>
Snow Sports	Coaching Scheme	<a href="#">Instructor + Coach - Snowsport England</a>	N/A	<a href="#">Book your course here</a>
Snow Sports	Volunteering	<a href="#">Volunteering - Snowsport England</a>	N/A	<a href="#">See the page to apply</a>
Squash	England Squash Level 1- Participation Coach Award (Hy)	<a href="#">England Squash - Course - England Squash Level 1- Participation Coach Award (Hy)</a>	Must be 16+, need reasonable understanding of the game, and a laptop	<a href="#">See page for available dates</a>
Squash	England Squash Club Coach Award (Level 2)	<a href="#">England Squash - Course - England Squash Club Coach Award (Level 2)</a>	Must be 17+, technically competent, have level 1, have England Squash Co	N/A
Squash	Coaching Courses List	<a href="#">England Squash - About our courses</a>	Requirements vary per qualification	<a href="#">See the page for more information</a>
Surf	Surf Instructor	<a href="#">Surf Instructor/Recreation Award - Surfing England Learning</a>	Must have a minimum level surfing ability, complete the code of conduct a	<a href="#">Start now! - See page sign up</a>
Surf	Surf Instructor further details	<a href="#">Coaching Hub - Surfing England</a>	N/A	N/A
Swimming	Swim England Assistant Swimming Coach	<a href="#">Swim England Assistant Swimming Coach</a>	Must be 16+ - do not need previous experience of coaching!	<a href="#">Search courses on the site now</a>
Swimming	Swim England Swimming Coach	<a href="#">Swim England Swimming Coach</a>	Must be 18+, have your level 1 certificate, be coaching regularly, be a worki	<a href="#">Search courses on the site now</a>
Table Tennis	Coaching Hub	<a href="#">Become a coach - Table Tennis England</a>	Requirements vary per qualification	N/A
Table Tennis	Level 1 Session Coach Award in Coaching Table Tennis	<a href="#">Level 1 Coaching Info May 2021.pdf</a>	Must be 16+, and child protection workshop	N/A
Table Tennis	Level 2 Lead Coach	<a href="#">L2 Lead Coach Content 05.10.21.pdf</a>	Must be 18+	N/A
Taekwondo	Coaching Pathway	<a href="#">Poomsae Coaches - British Taekwondo</a>	Variable	<a href="#">Reachout to the email on the website</a>
Taekwondo	Referee Pathway	<a href="#">Poomsae Officials - British Taekwondo</a>	Variable	<a href="#">See website for more information</a>
Ultimate Frisbee	Coaching Pathway	<a href="#">Coach Education - UK Ultimate</a>	Variable	<a href="#">See website for more information - Email</a>
Volleyball	Assistant Coach Award	<a href="#">Assistant Coach Award</a>	Must be 18+ and communicate effectively in English	N/A
Volleyball	Club Coach Award	<a href="#">Volleyball England Club Coach Award</a>	Must be 18+, hold a Volleyball England Assistant Coach Award, have safeg	N/A
Wakeboarding	Coaching Pathway	<a href="#">Coaching Pathway - British Water Ski and Wakeboard</a>	Variable	N/A
Wakeboarding	BWSW Level 1 WSWB Coach	<a href="#">BWSW Level 1 WSWB Coach - British Water Ski and Wakeboard</a>	Must be a BWSW member, be 16+, hold the boat driver level 2 qualification	<a href="#">See related links on the page</a>
Yoga	Certificate, Diploma, Progression and Advanced Integral	<a href="#">Teacher Training - The British Wheel of Yoga</a>	Variable	<a href="#">Find a course near you</a>
Yoga	Taking your teaching further	<a href="#">Professional development - The British Wheel of Yoga</a>	Variable	<a href="#">See website for more information</a>

# Club Profiles



STUDENT LEADER  
CONFERENCE

Section	Notes
<b>Club Name</b>	
<b>Our offer</b>	
<b>Rec sport offer</b>	e.g. social sport once a week
<b>Competitive sport offer</b>	e.g. 7 teams- competing in BUCs and LUSL. First team is in tier 1. 7 <sup>th</sup> team in LUSL only. Trials required for all teams.
<b>Cost</b>	
<b>Membership Cost</b> Full year Half year	e.g. £105 for the year – includes match travel
<b>Session cost</b>	e.g. £3 per session
<b>Training travel costs</b>	e.g. £7 per week
<b>Match travel costs</b>	Included in membership price
<b>Additional costs</b>	e.g. tour (optional), kit and equipment etc.
<b>Estimated Annual Cost</b>	
<b>Training</b>	
<b>Training Times &amp; Location</b>	e.g. First team- <i>Tuesdays 6–8pm, Marshall Building Sports Hall.</i> <i>Social session- Brixton rec- Weds 6-8pm</i>
<b>What does training look like?</b>	e.g. <i>Warm-up, skills based, matches, social sport.</i>
<b>Coaching Provided?</b>	e.g. <i>Yes – sessions led by a qualified coach or student leader.</i>
<b>Competitions/ Matches</b>	
<b>Competitions / Matches</b>	e.g. <i>BUCS Wednesdays, friendlies, internal tournaments. Participation optional.</i>
<b>Trials</b>	Are these required? Date and time?
<b>General</b>	
<b>Equipment Needed</b>	e.g. <i>Bring trainers and water. Equipment is provided.</i>
<b>Focus This Year</b>	e.g. <i>Build community, compete at higher level in BUCS, promote inclusive sport, run a large event</i>
<b>Accessibility &amp; Support Info</b>	e.g. <i>session adaptations</i> any access requirements, please contact



# Why Club Profiles Matter

## ✓ Clear, Accessible Info for Students

- Helps new and returning students understand exactly what to expect
- Builds trust and improves sign-up confidence

## 📈 Boost in Membership & Retention

- Clear costs, session details, and opportunities attract more members
- Encourages year-round engagement (not just in Freshers Week)

## 🤝 Fewer Complaints, More Clarity

- Sets expectations early – reduces miscommunication and frustration
- Helps committees and SU teams support students better

## Improves Accessibility & Inclusivity

- Gives students with additional needs time to ask for support
- Encourages clubs to be proactive and inclusive in their planning

## ☀️ Showcases Club Culture & Values

- Lets clubs stand out at the Welcome Fair and online
- Helps students find the right fit for their goals and interests

# Elite Performance Student Network



## A new space for high-performing student athletes at LSE

We're building a network to support and connect elite-level athletes studying at LSE. This initiative is in development, but here's what we're aiming to offer:



### Tailored Support & Guidance

- Named SU contact for athlete support
- Help balancing academic and performance commitments
- Signposting to LSESU advice and wellbeing services

### Funding & Access

- Information on any potential funding support
- Some Facility access



### Connection & Community

- Networking events with other performance athletes
- Links to SU sports clubs and potential leadership opportunities
- Opportunities to share experiences and shape future support

# High Performance Team Programme



- Exploring how we can support high-performing student teams
- We're in the early stages of designing a new programme to offer support to a small number of teams performing at a high level — competitively or developmentally 📢
- Application process open to all clubs — not just BUCS or LUSL participants.

## 💡 Potential support ideas (not confirmed):

- Group gym sessions
- Strength & Conditioning (S+C)
- Coaching
- Personal Training support
- Fitness testing and training guidance
- Performance planning
- Small financial or in-kind support (where possible)





# Funding and Training allocations



# Cost of sport

Released January 2025

Current expenditure vs Ideal expenditure and hidden costs

- This will underpin your funding application process!
- Allows us to better allocate funding, find out the true cost of sport and bid for more future funding- essential this is completed

Clubs who haven't completed this will have less accurate funding allocation

## Clubs who have completed

Boxing  
Brazilian Jiu Jitsu  
Hockey  
Kabaddi  
Korfball  
Korfball  
Fencing  
Badminton  
Netball  
Pole Fitness Club

Rowing  
Rugby  
Surf  
Tennis  
Volleyball  
Wakeboarding  
Water Polo  
Taekwondo  
Squash  
Women's Rugby





# Funding Allocation & Criteria



Application process coming soon...

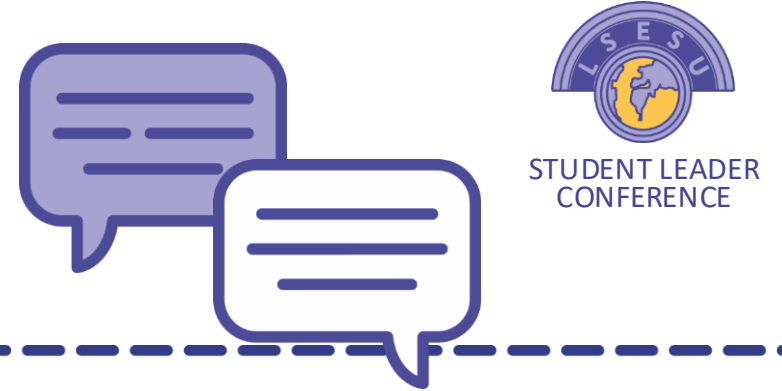
Think about your annual budget and membership prices

What additional funding is needed

Is there anything you would like to offer?

- Free travel to matches?
- Coaching?
- A large event?
- More comps?
- Recreational offer?

# Training Allocation



- Aware of the issue for combat sports- actively looking for short- and long-term solutions

Application process coming soon...

Planning to announce this soon to give clubs plenty of planning time

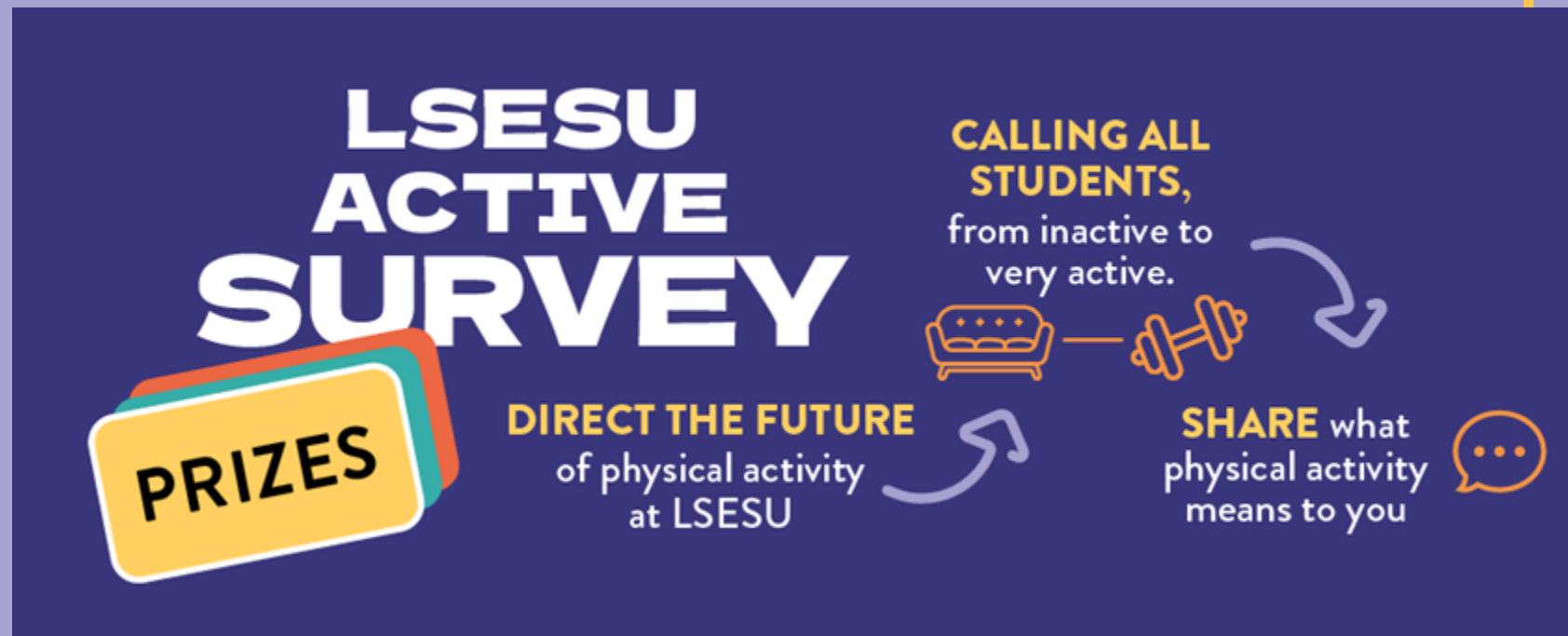
Can book any additional space that might be needed

BUCS fixtures- we will book in majority of these

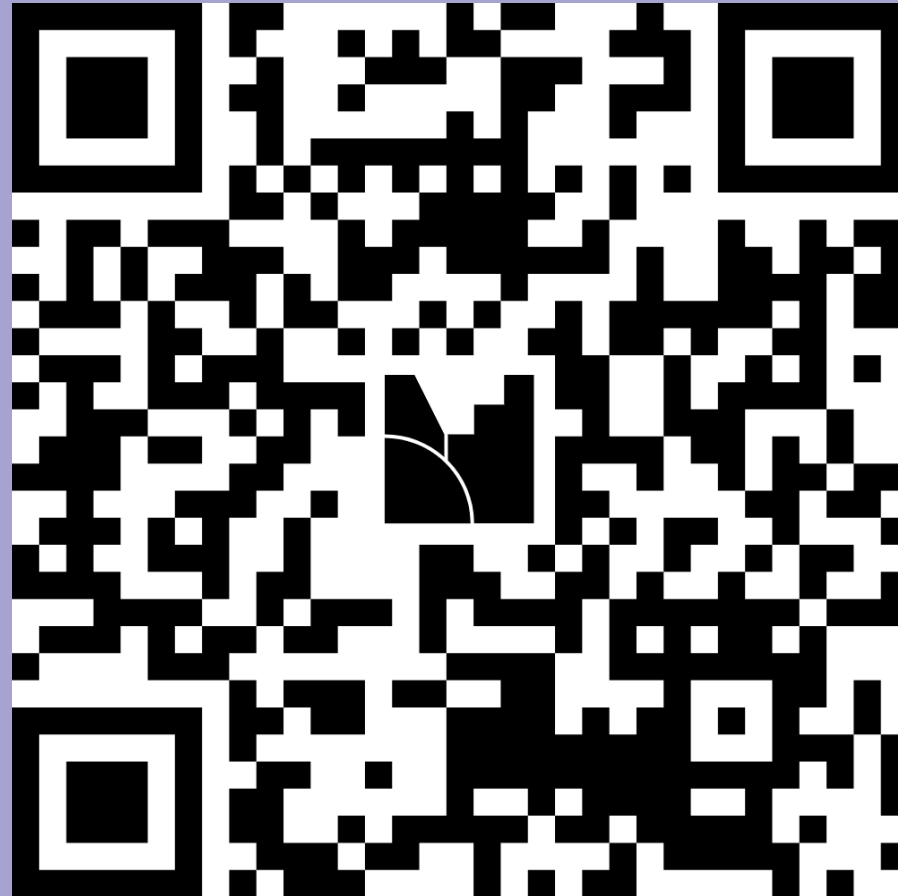
LUSL- your responsibility for booking spaces

# Value of sport

- 1109 responses- thank you for your responses and promotion!
- Report is in the process of being written
- Initial results are great!



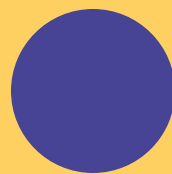
Feedback on your experience with us- what  
changes would you like?  
How can we improve?



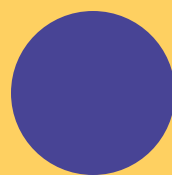
# Emergency Contact Details



- SU sport: [SU.sport@lse.ac.uk](mailto:SU.sport@lse.ac.uk)
- Phone: 02071075691



# Add-Victor



add-victor<sup>+</sup>

Committee Training



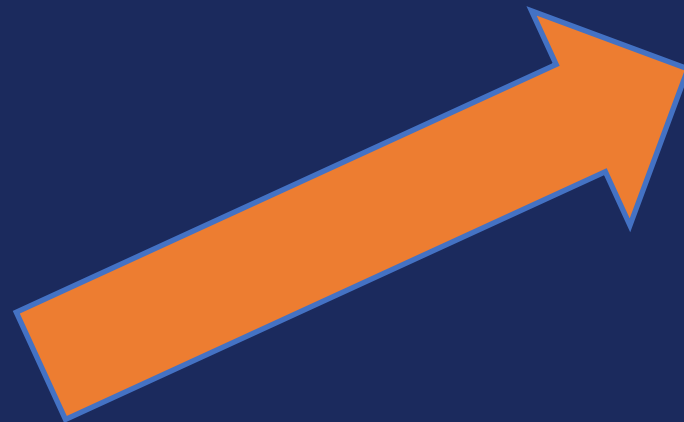
# Introduction to add-victor

---

“The **careers platform for high-achieving individuals**. Connecting the best sporting & military DNA with ambitious companies. This includes Student-Athletes, semi & professional athletes, Olympians, Paralympians, as well as military veterans across all three services.”

## Free Services for Committee Members:

- + Complete your profile in 10 minutes
- + Access free support for Committee Members professional development
- + Connect with team: [info@add-victor.com](mailto:info@add-victor.com)



&

[add-victor.com/register](https://add-victor.com/register)

add-victor<sup>+</sup>

# Your Opportunities

---

## Skills Gap:

- + 87% companies experience a “skills deficit” in their current workforce
- + Harvard Business School:  
“former college athletes significantly outperform non-athletes in the corporate world”
- + You are the solution!

## Access:

- + ‘Knowledge Hub’ education resources
  - + Transition Blogs
  - + Sector Insights
  - + Case Studies
  - + Workshops (CVs, Cover Letters, Interviews)
- + 1-to-1 athlete consultations
- + Bespoke & exclusive job opportunities for athletes



[add-victor.com/register](https://add-victor.com/register)

add-victor<sup>+</sup>

# Club Sponsorship

---

## Packages:

- + Financial support (with commission & bonuses)
- + Member development (with professional development workshops & opportunities)
- + Graduate prospects (with member access to graduate roles)

## Programme:

- + In first 2 years (launched Oct-22)
  - + 85+ university clubs from 20+ institutions
  - + 1800+ student-athletes supported

Email to find out more:

[aturnbull@add-victor.com](mailto:aturnbull@add-victor.com)

## Finish your profile!



[add-victor.com/register](https://add-victor.com/register)

add-victor<sup>+</sup>

add-victor



@add\_victor



@add-victor



@add\_victor

Committee Training

# Give us your feedback!

Please scan the QR Code to let us know how you found this session/the day.



# Next Sessions

- **Event Planning Essentials**  
11:30 – 12:20      LSESU Venue (-2 Floor)
- **Working with Alumni: Relations, Engagement and Outreach (With LSE Alumni Centre)**  
11:30 – 12:20      6th Floor Cafe

