

A group of young people, mostly of Asian descent, are captured in a dynamic dance pose on a stage. They are wearing casual, contemporary clothing like jeans, sweaters, and jackets. The background features a wall with a grid of small, circular perforations. The entire image is overlaid with a semi-transparent blue filter. Centered over the image is the text "Welcome Fair Briefing: Clubs and Societies 2025" in a clean, white, sans-serif font.

Welcome Fair Briefing: Clubs and Societies 2025

Introductions, Pt. 1



Grace Brockhus,
Head of Student
Communities and
Partnerships



Warren Bingham-
Roberts, Societies
Manager



Alex Newton,
Sport and Recreation
Manager



Sachin Bhopal-Myers
Activities and
Communities Officer

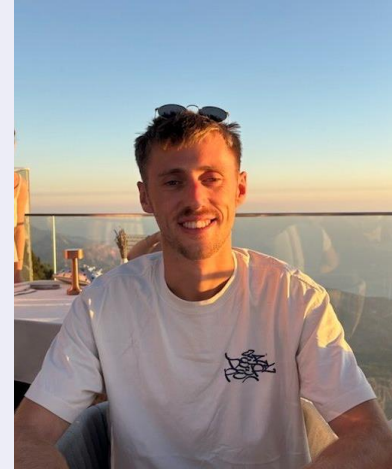
Introductions, Pt. 2



Abbie Earl,
Senior Societies
Coordinator



Madeleine Leong,
Societies Coordinator



Henry Levell,
Sports Coordinator

Overview

- The Welcome Fair is a 3 day activity laid on for our new and returning students – providing them with a chance to:
 - Meet the wide range of Clubs and Societies that exist under the LSESU, and discover more about what you have to offer them.
 - Get a taste of the various outlets that are available, including the Gym(s), the Three Tuns and the Marshall Building.
 - Learn about the different services they can make use of during their time as an LSE student, including those of our Advice and Representation teams.

Details

Where?

Sports Hall (and Weston Studio), Marshall Building

When?

Tuesday 23 September – Thursday 25 September (11am – 4pm)

Who?

(Up to) 100 stalls on each day, including 15 Externals

Themes

Tuesday 24 = National, Cultural, Faith & Charity/Political/Campaigning

Wednesday 25 = Sport, Special Interest & Media

Thursday 26 = Academic & Careers

Webpage = <https://www.lsesu.com/communities/hub/welcomefair/>

Timings

- 09:30-10:30am = Club and Society committee members check-in.
 - Only on the day that your group will have a stall. Please arrive on time!
- Enter Marshall Building through entrance by the Old Curiosity Shop.
 - Check-in with a member of SU staff, who will tell you where your stall is located.
 - 2 name badges will be left on your allocated table, to be worn by the (max.) 2* committee members per stall.
 - These badges will also allow you to use the 'Fast Track' queue into the building.
- 11am-12pm = Accessibility Hour
- 12pm-4pm = Welcome Fair

**Due to capacity, only 2 committee members will be allowed on each stall at any one time.*

Accessibility Hour

- Before the Welcome Fair is fully opened up at midday (12pm), we'll be hosting an accessibility hour (between 11am-12pm) for anyone that wishes to come along then.

The key differences will be as follows:

- No Music or Loud Noises
- Reduced Lighting
- All lifts will be labelled to ensure their use for accessible purposes only.
- NOTE: Please do not ask anyone about their access needs during this time.

Stalls

As part of your stall allocation, each group will have access to the following:

- 2 Exam Tables
- 2 Chairs
- 1 Backboard (for the purpose of displaying promotional material, etc.)

In addition, please note that:

- We won't be providing materials/stationery for the attaching of resources to backboards.
- There won't be any power sockets available for you to use on your stall.
- There will be WiFi available in the Sports Hall, but no / limited access to 4/5G.
- We can't store anything in the Sports Hall, so please bring everything with you on the day.



General Rules / Etiquette, Pt.1

- All groups are expected to abide by the Student Activities Code of Conduct
- No food or drink (except water) will be permitted into the Sports Hall (unless it's been pre-agreed).
- You must not collect any personal data from attendees to your stall (e.g. Names and Email Addresses) - **GDPR!**
- You must not play any amplified music on your stall.
- Please report any concerns to a member of LSESU staff and/or su.societies@lse.ac.uk as soon as you can.
- Please clear away all rubbish, and dispose of it accordingly in the bins provided.

General Rules / Etiquette, Pt.2

- If you're a National or Cultural Group, you'll be able to make use of your country's flag as part of your stall only. Otherwise, LSE's flag ban policy will remain in place throughout the Welcome Fair as a whole.
- The layout of the Fair will be alphabetical for the most part, but some groups (i.e. those expected to attract a larger crowd) have been located differently, so as to avoid situations of overcrowding as best as possible.
- We really want to make your own experience of this year's Welcome Fair an enjoyable one. We recognise that you're giving up your days in what's a very busy period, and therefore want you to walk away from it with positive reflections. As such, the Societies Team will be checking in with each of you throughout the day, to make sure everything's going ok, and to collect live feedback on the overall Welcome Fair experience.
- Have fun!

Health and Safety

Fire Alarms

In the event that one sounds, please leave the hall calmly via the emergency exits.

Fire Evacuation Point

Should a fire alarm go off, please head to the gate entrance of Lincoln's Inn Fields once exited.

Trip Hazards

Please ensure that all rubbish is put in the bins provided, and that nothing is obstructing the walkways.

Wellbeing

If you feel unwell at any point or simply want a bit of a timeout, please do let us know, and look out for one another.

Welcome 2025

You can check out our Welcome offer by heading to the following webpage:

<https://www.lsesu.com/welcome2025/>

Be sure to follow what's going on, and share with your peers / new students!

Top Tips!

- Come in national/cultural dress, or merch/stash/uniform.
- Have an interactive element to your stall.
- Give out freebies (e.g. Pens, Packaged Sweets, etc).
- Have QR codes linking to your SU Webpage / Social Media.
- Laptops / iPads (etc.) for visual aids.
- Encourage stall visitors to purchase memberships there and then!
- Arrange shifts with other committee members so that you can take breaks!



FAQs / Last Year's Feedback

- Space
 - With over 300 Student Groups and 60 Externals across the 3 days, it will feel busy in the Sports Hall as space is very tight, but we try and ensure the layout allows for a good flow of people to avoid big crowds.
- Food and Drink
 - You can take as many breaks as you need for food and drink, but please do so outside of the Sports Hall. Bringing a water bottle / packaged foods is fine!
 - The reason for this is the carpet – we need to avoid spillages / trodden food.
- Lighting
 - Following the accessibility hour, it's been fed back that the increase in lighting can be too harsh, so we'll be keeping it a bit dimmer, and will adjust based on what the feeling is on the day.
- 2 Stall Members
 - This is due to space constraints. We'd recommend that you split shifts between committee members across the day so you can have breaks/lunch, etc.

Give It a Go

- If you're organising a 'Give It a Go (GIAG)' event as part of the Welcome period in particular, please do make this clear as part of the Event Form itself, as we'll then be able to include it within the LSESU's central promotion of these activities.
- GIAG events are activities laid on by Clubs and Societies throughout the Welcome period - organised for the purpose of showcasing what their group is all about, and giving new/returning students a chance to meet new people, and see what's on offer before becoming a full member.
- Keep an eye on social media for the most up to date info about Clubs and Socs events over the Welcome period.
- **IMPORTANT: Room Bookings for the start of term (after Welcome Week) will be confirmed once timetabling has been finalised by the School!**

Social Media

Be sure to tag us (**@llesu**) in what you get up to throughout the Welcome period!



A photograph of four diverse students walking along a paved path in a university setting. From left to right: a Black woman with long braids in a green top and white trousers; a woman in a yellow jacket and grey trousers; a man in a striped shirt and khaki pants; and a white woman in a green top and white trousers. In the background, there is a large globe sculpture and red brick buildings.

Thank you!

Any questions?

Email = su.societies@lse.ac.uk / su.sport@lse.ac.uk